



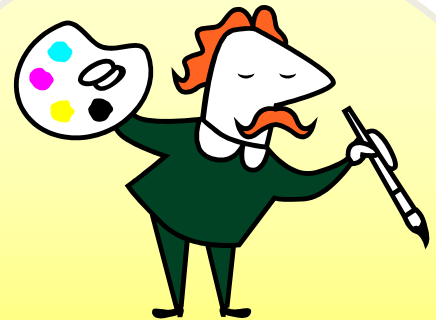
Cysylltydd  
Campus



Capten  
Cymeriad



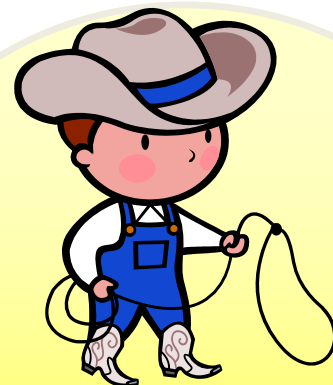
Golygydd  
Geiriau



Arlunydd  
Arbennig



Cyhoeddwr  
Cras



Cyfarwyddwr  
Cyfathrebu



Adnabod

Awdur

## **Cysylltydd Campus**

Eich swydd chi ydy meddwl am:

- Beth yw'r cysylltiadau rhwng eich bywyd chi a'r llyfr?
- Sut mae'r stori yn eich atgoffa o'ch bywyd chi, e.e. pethau sy'n digwydd adref neu yn yr Ysgol?
- Oes pobl yn y stori sy'n atgoffa chi o rywun rydych yn nabod?

## **Capten Cymeriad**

Eich swydd chi ydy meddwl am:

- Pwy yw prif gymeriad yn y stori?
- Beth mae'r prif gymeriad yn gwneud yn ystod y stori?
- Pa gymeriadau eraill sydd yn y stori?

## **Golygydd Geiriau**

Eich swydd chi ydy chwilio am:

- Eiriau arbennig yn y stori
- Mae angen geiriau;
  - newydd
  - gwahanol/rhyfedd
  - anodd

### **Cyfarwyddwr Cyfathrebu**

Eich swydd chi ydy meddwl am **dri** o gwestiynau rydych eisiau trafod gyda'r grŵp.

- Ble?
- Pryd?
- Pwy?
- Beth?
- Sut?

### **Cyhoeddwr Cras**

Eich swydd chi yw dweud y stori yn eich geiriau chi.

- Bydd angen cynnwys 3 phrif beth a ddigwyddodd yn y stori

### **Arlunydd Arbennig**

Eich swydd chi ydy i dynnu llun unrhyw beth yr oeddech yn hoffi am y stori.

- Gallwch feddwl am:
  - leoliad
  - ddarn diddorol
  - beth ydych chi'n meddwl bydd yn digwydd nesaf

## **Adnabod Awdur**

Eich sywdd chi ydy adnabod technegau ysgrifennu'r awdur.

-Ydy'n nhw'n defnyddio ailadrodd?

-Ydy'n nhw'n defnyddio patrwm o dri e.e. dewr,cryf a chyfeillgar

-Ydych chi wedi darllen llyfr gan yr awdur yma yn y gorffennol?



Story

Connector



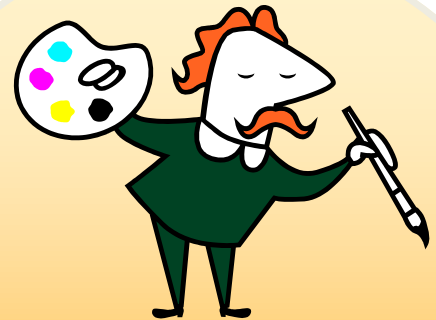
Character

Captain



Word

Finder

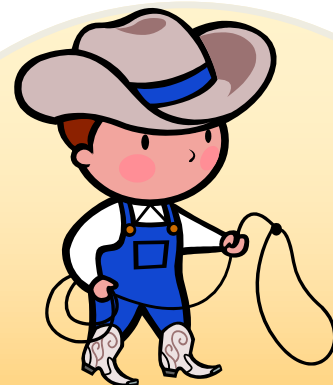


Artful

Artist



Reteller

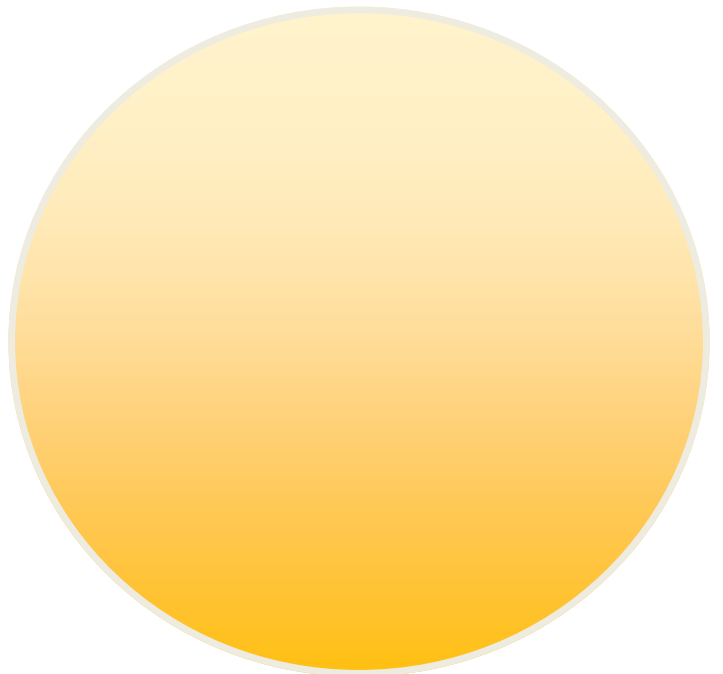
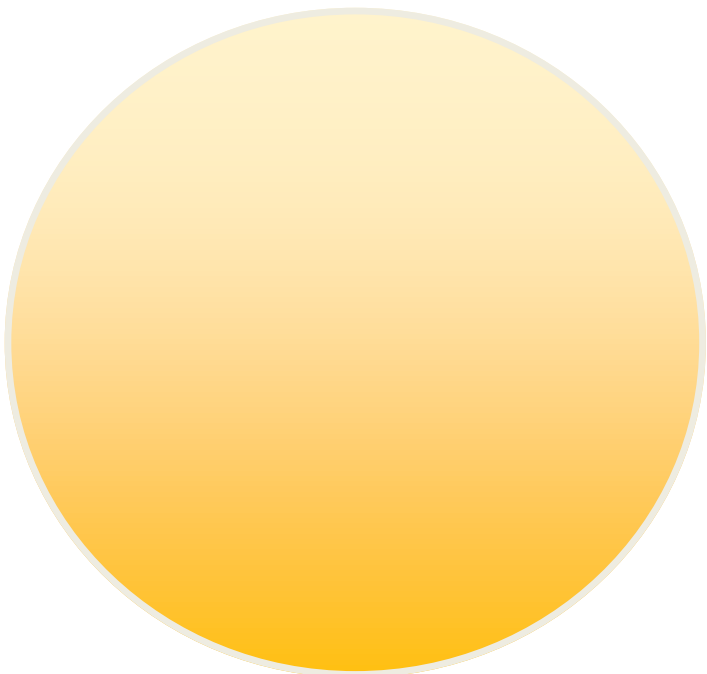
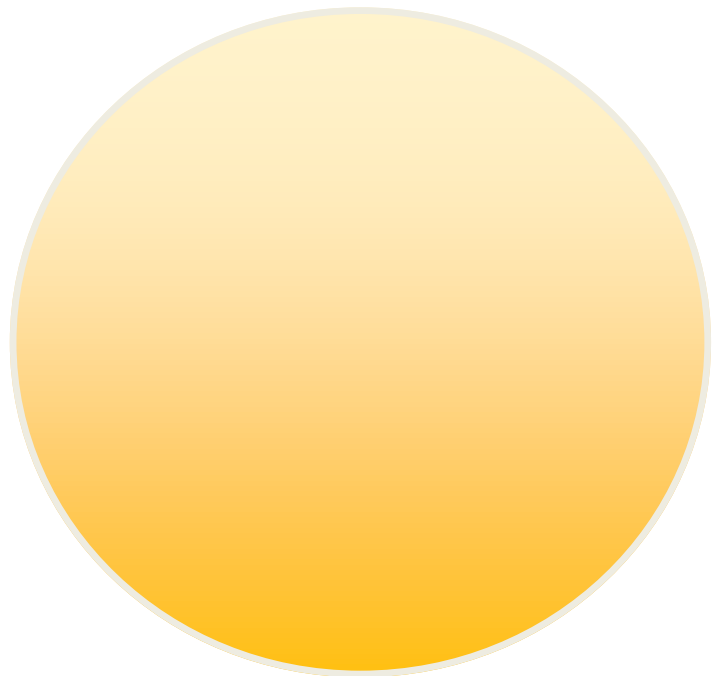
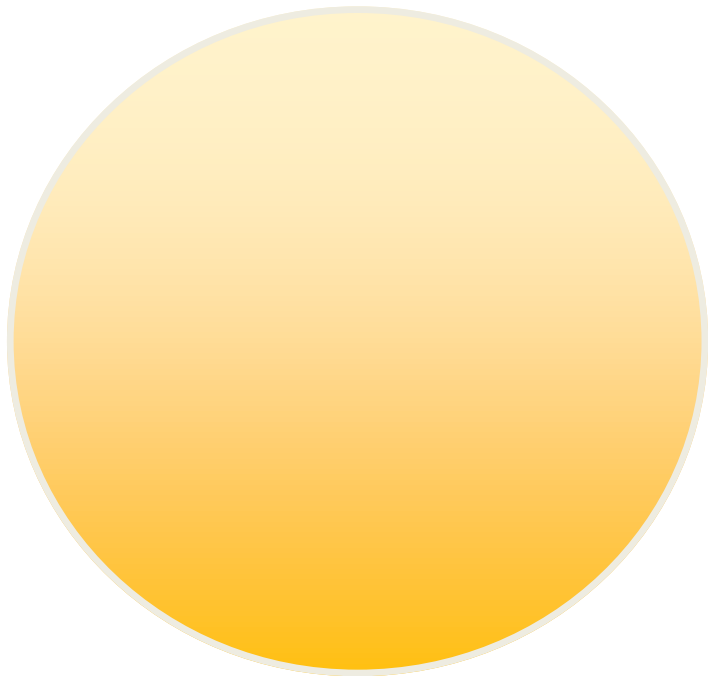
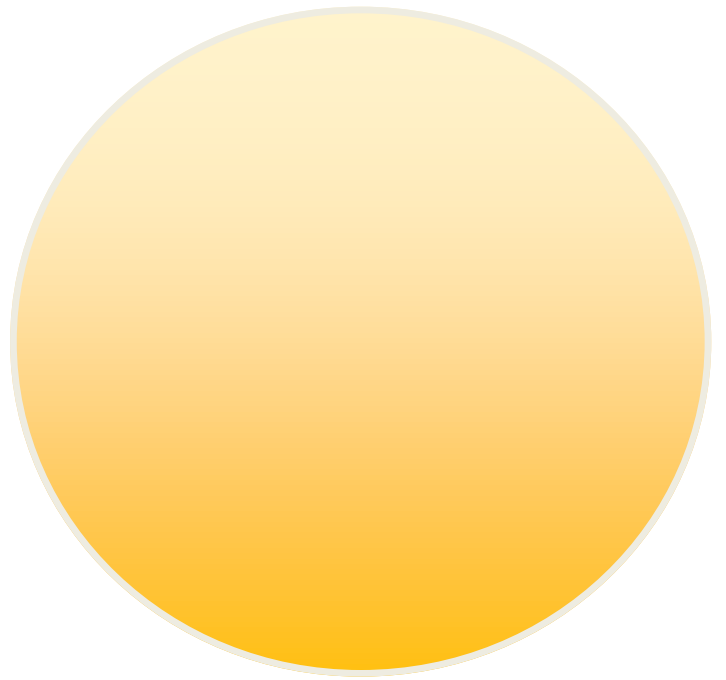


Discussion

Director



Author 's  
Tricks



## **Story Connector**

Your job is to think about:

- What are the connections between your life and the book?
- How does the story remind you of your life e.g. things that may happen at home or in school?
- Are there characters in the book that remind you of someone you know?

## **Character Captain**

Your job is to think about:

- Who is the main character in this story?
- What does the main character do in this story?
- What is the role of the other characters?

## **Word Finder**

Your job is to look for:

- Special words in the story
- Words that are:
  - new
  - different/strange
  - difficult



### **Discussion Director**

Your job is to think of three good questions to ask. Think of:

- Where?
- When?
- Who?
- What?
- How?

### **Reteller**

Your job is to retell the story in your own words.

- Think of 3 important things that have happened. In the story.

### **Artful Artist**

Your job is to draw anything that you liked about this story .

- You can think of:
  - the setting
  - an exciting part
  - what you think will happen next

## Author's Tricks

Your job is to recognise the author's writing style and tricks.

- Does the author use repetition?
- Does the author use the pattern of three e.g. suspicious, sad, and creepy
- Have you read a book by this author in the past.